

M1-D01

LED Module



[Technical Parameters]

LED Brand	Philips-Lumileds Luxeon T
Power Wattages	40W/ 50W/ 60W
Luminous Efficiency of Module	95-105lm/W
CCT	3000K 4000K 5000K 5700K
Dimensions	275mm * 70mm * 49mm
IP Rating	IP68
Driving Current	700-1050mA
LEDs (Pieces)	18
Waterproof Connector	2-pin, threaded, M15 (UL,/TUV/SGS/CQC-Listed)
N.W.	0.70Kg

M2-D01

LED Module



[Technical Parameters]

LED Brand	Philips-Lumileds Luxeon T
Power Wattages	40W/ 50W/ 60W
Luminous Efficiency of Module	95-105lm/W
CCT	3000K 4000K 5000K 5700K
Dimensions	298mm * 70mm * 48mm
IP Rating	IP68
Driving Current	700-1050mA
LEDs (Pieces)	18
Waterproof Connector	2-pin, threaded, M15 (UL,/TUV/SGS/CQC-Listed)
N.W.	0.65Kg

M6-D01

LED Module

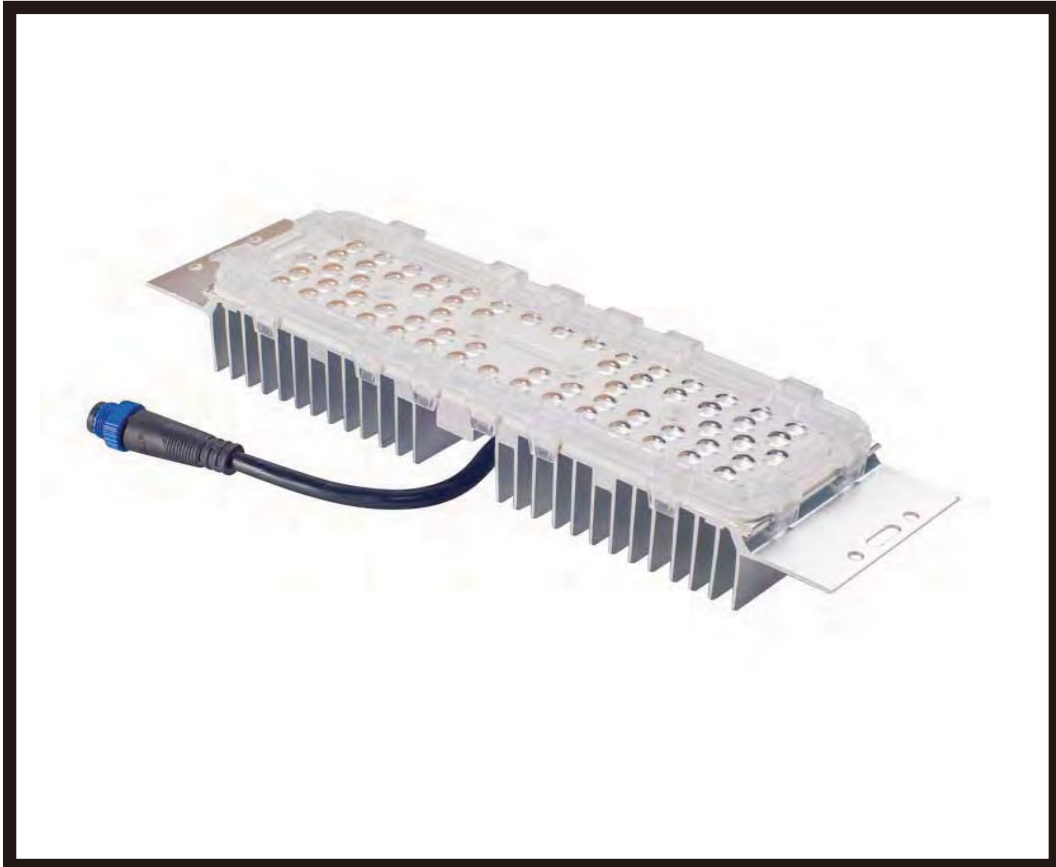


[Technical Parameters]

LED Brand	Lumileds Luxeon TX
Power Wattages	20W/ 25W/ 30W
Luminous Efficiency of Module	95-105lm/W
CCT	3000K 4000K 5000K 5700K
Dimensions	116mm * 84mm * 48mm
IP Rating	IP68
Driving Current	700-1050mA
LEDs (Pieces)	9
Waterproof Connector	2-pin, threaded, M15 (UL,/TUV/SGS/CQC-Listed)
N.W.	0.38Kg

M7-D01

LED Module



[Technical Parameters]

LED Brand	Philips-Lumileds 3030
Power Wattages	50W/ 60W
Luminous Efficiency of Module	105lm/W
CCT	3000K 4000K 5000K 5700K
Dimensions	300mm * 70mm * 48mm
IP Rating	IP68
Driving Current	1050mA
LEDs (Pieces)	49, 63
Waterproof Connector	2-pin, threaded, M15 (UL,/TUV/SGS/CQC-Listed)
N.W.	0.61Kg

M9-D01

LED Module



[Technical Parameters]

LED Brand	Philips-Lumileds 3030
Power Wattages	30W/ 40W
Luminous Efficiency of Module	110lm/W
CCT	3000K 4000K 5000K 5700K
Dimensions	300mm * 70mm * 35mm
IP Rating	IP68
Driving Current	700mA
LEDs (Pieces)	35, 45
Waterproof Connector	2-pin, threaded, M15 (UL,/TUV/SGS/CQC-Listed)
N.W.	0.52Kg

M10-D01

LED Module



[Technical Parameters]

LED Brand	Philips-Lumileds 3030
Power Wattages	20W/ 30W
Luminous Efficiency of Module	100lm/W
CCT	3000K 4000K 5000K 5700K
Dimensions	115mm * 89mm * 48mm
IP Rating	IP68
Driving Current	700mA
LEDs (Pieces)	20, 30
Waterproof Connector	2-pin, threaded, M15 (UL,/TUV/SGS/CQC-Listed)
N.W.	0.35Kg

M18-D01A

LED Module

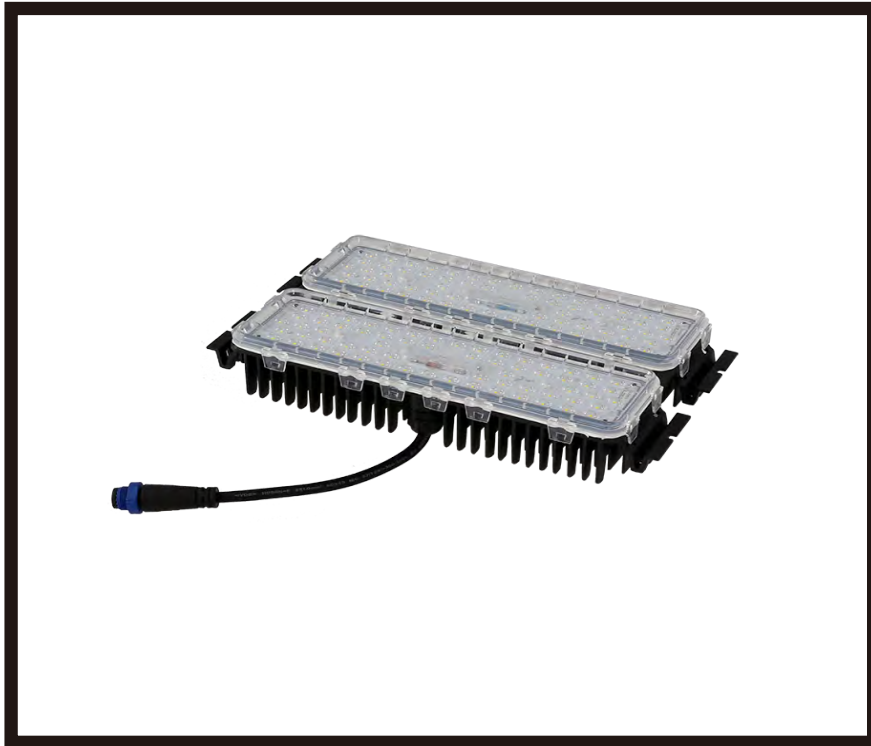


[Technical Parameters]

LED Brand	Philips-Lumileds 3030
Power Wattages	40W/50W/60W
Luminous Efficiency of Module	127lm/w, 135lm/w,140lm/w
CCT	3000K 4000K 5000K 5700K
Dimensions	275.2*74.6*51.5mm
IP Rating	IP68
Driving Current	700mA,860mA,1050mA
LEDs (Pieces)	63
Waterproof Connector	2-pin, threaded, M15 (UL,/TUV/SGS/CQC-Listed)
N.W.	0.66 Kg

M18-D01B

LED Module



[Technical Parameters]

LED Brand	Philips-Lumileds 3030
Power Wattages	80W/100W/120W
Luminous Efficiency of Module	127lm/w, 135lm/w, 140lm/w
CCT	3000K 4000K 5000K 5700K
Dimensions	275.2*154.6*51.5mm
IP Rating	IP68
Driving Current	700mA, 860mA, 1050mA
LEDs (Pieces)	126
Waterproof Connector	2-pin, threaded, M15 (UL,/TUV/SGS/CQC-Listed)
N.W.	1.36 Kg

M18-D01C

LED Module

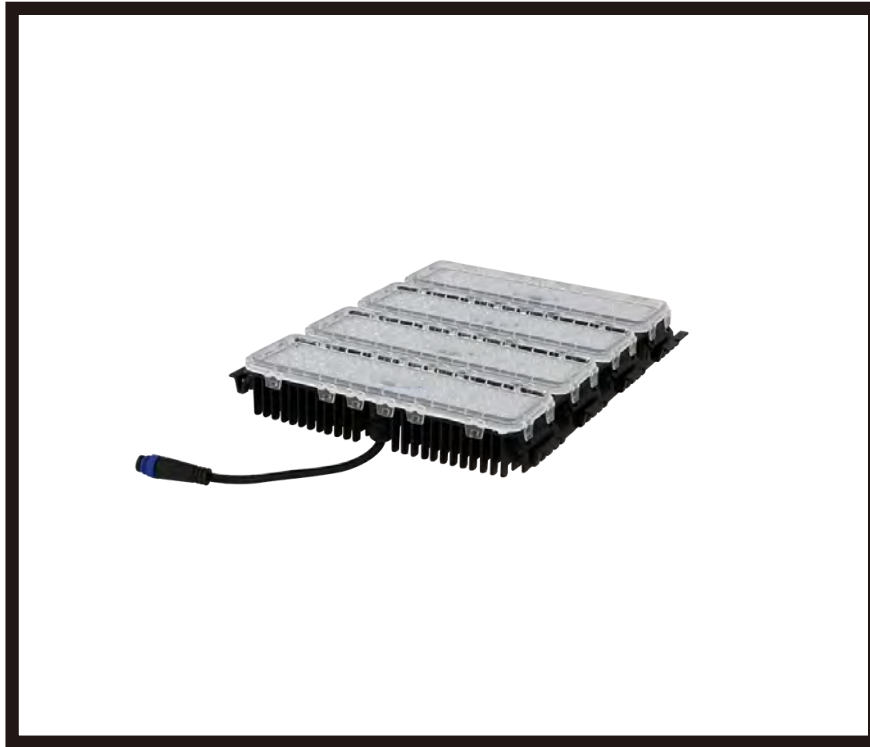


[Technical Parameters]

LED Brand	Philips-Lumileds 3030
Power Wattages	120W/150W/180W
Luminous Efficiency of Module	127lm/w, 135lm/w,140lm/w
CCT	3000K 4000K 5000K 5700K
Dimensions	275.2*234.6*51.5mm
IP Rating	IP68
Driving Current	700mA,860mA,1050mA
LEDs (Pieces)	189
Waterproof Connector	2-pin, threaded, M15 (UL,/TUV/SGS/CQC-Listed)
N.W.	1.96 Kg

M18-D01D

LED Module



[Technical Parameters]

LED Brand	Philips-Lumileds 3030
Power Wattages	160W/200W/240W
Luminous Efficiency of Module	127lm/w, 135lm/w,140lm/w
CCT	3000K 4000K 5000K 5700K
Dimensions	275.2*314.6*51.5mm
IP Rating	IP68
Driving Current	700mA,860mA,1050mA
LEDs (Pieces)	252
Waterproof Connector	2-pin, threaded, M15 (UL,/TUV/SGS/CQC-Listed)
N.W.	2.52 Kg

M1-D22

LED Module



[Technical Parameters]

LED Brand	Philips-Lumileds/ Refond/ Lightning 3030
Power Wattages	40W/ 50W/ 60W
Luminous Efficiency of Module	110-120lm/W
CCT	3000K 4000K 5000K 5700K 6500K
Dimensions	298mm * 70mm * 47mm
IP Rating	IP68
Driving Current	750-1100mA
LEDs (Pieces)	64
Waterproof Connector	2-pin, threaded, M15 (UL,/TUV/SGS/CQC-Listed)
N.W.	0.68Kg

M2-D22

LED Module

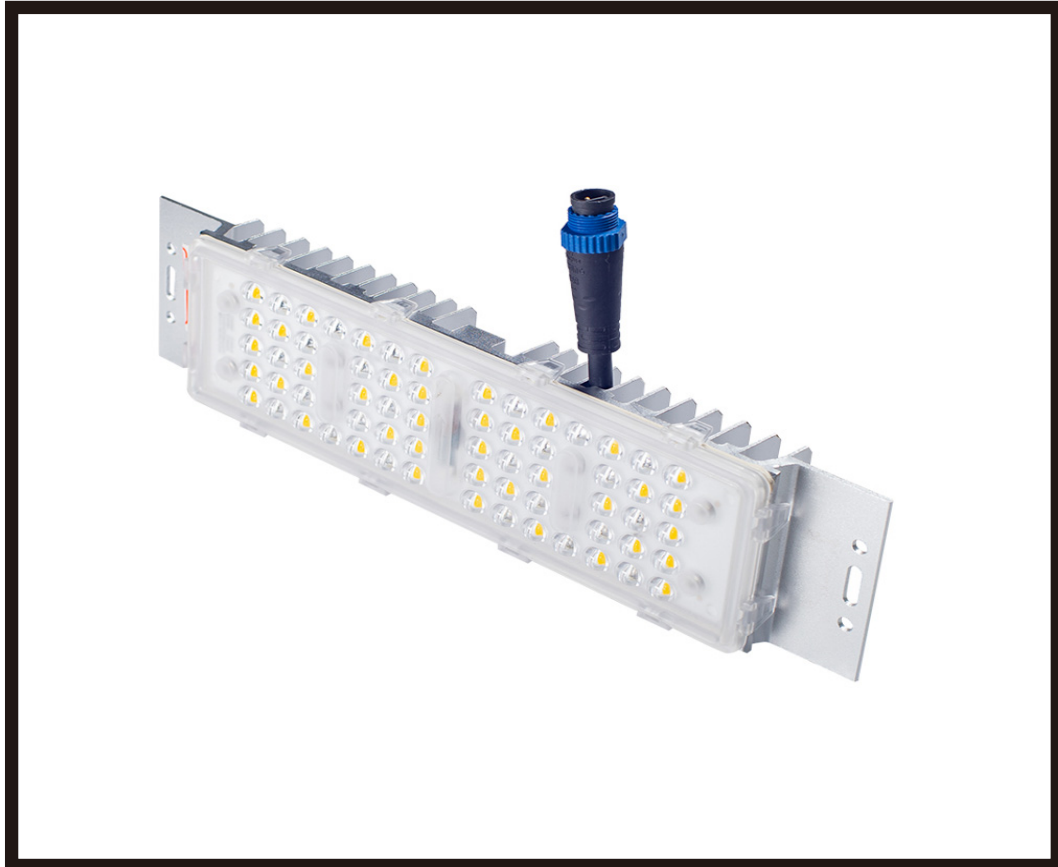


[Technical Parameters]

LED Brand	Philips-Lumileds/ Refond/ Lightning 3030
Power Wattages	40W/ 50W/ 60W
Luminous Efficiency of Module	110-120lm/W
CCT	3000K 4000K 5000K 5700K 6500K
Dimensions	298mm * 70mm * 47mm
IP Rating	IP67
Driving Current	750-1100mA
LEDs (Pieces)	64
Waterproof Connector	2-pin, threaded, M15 (UL,/TUV/SGS/CQC-Listed)
N.W.	0.70Kg

M3-D22

LED Module



[Technical Parameters]

LED Brand	Philips-Lumileds/ Refond/ Lightning 3030
Power Wattages	20W/ 30W/ 40W
Luminous Efficiency of Module	110-120lm/W
CCT	3000K 4000K 5000K 5700K 6500K
Dimensions	298mm * 70mm * 33mm
IP Rating	IP68
Driving Current	350-750mA
LEDs (Pieces)	40
Waterproof Connector	2-pin, threaded, M15 (UL,/TUV/SGS/CQC-Listed)
N.W.	0.51Kg

M4-D22

LED Module



[Technical Parameters]

LED Brand	Philips-Lumileds/ Refond/ Lightning 3030
Power Wattages	20W/ 30W/ 40W
Luminous Efficiency of Module	110-120lm/W
CCT	3000K 4000K 5000K 5700K 6500K
Dimensions	298mm * 70mm * 33mm
IP Rating	IP67
Driving Current	350-750mA
LEDs (Pieces)	40
Waterproof Connector	2-pin, threaded, M15 (UL,/TUV/SGS/CQC-Listed)
N.W.	0.53Kg

M7-D22

LED Module



[Technical Parameters]

LED Brand	Philips-Lumileds/ Refond 3030
Power Wattages	20W/ 30W/ 40W
Luminous Efficiency of Module	110-120lm/W
CCT	3000K 4000K 5000K 5700K 6500K
Dimensions	168mm * 100mm * 33mm
IP Rating	IP67
Driving Current	450-850mA
LEDs (Pieces)	40
Waterproof Connector	2-pin, threaded, M15 (UL,/TUV/SGS/CQC-Listed)
N.W.	0.48Kg

M8-D22

LED Module



[Technical Parameters]

LED Brand	Philips-Lumileds/ Refond 3030
Power Wattages	40W/ 50W/ 60W
Luminous Efficiency of Module	110-120lm/W
CCT	3000K 4000K 5000K 5700K 6500K
Dimensions	168mm * 130mm * 35mm
IP Rating	IP67
Driving Current	750-1100mA
LEDs (Pieces)	64
Waterproof Connector	2-pin, threaded, M15 (UL,/TUV/SGS/CQC-Listed)
N.W.	0.59Kg

M12-D22

LED Module



[Technical Parameters]

LED Brand	Philips-Lumileds/ CREE/ Hongli/ Lightning 3030
Power Wattages	30W/ 40W/ 50W
Luminous Efficiency of Module	110-120lm/W
CCT	3000K,4000K,5000K,5700K,6500K
Dimensions	298mm * 70mm * 38 mm
IP Rating	IP68
Driving Current	750-1300mA
LEDs (Pieces)	60
Waterproof Connector	2-pin, threaded, M15 (UL,/TUV/SGS/CQC-Listed)
N.W.	0.48Kg

M13-D22

LED Module



[Technical Parameters]

LED Brand	Philips-Lumileds/ CREE/ Hongli/ Lightning 3030
Power Wattages	30W/ 40W/ 50W
Luminous Efficiency of Module	110-120lm/W
CCT	3000K,4000K,5000K,5700K,6500K
Dimensions	298mm * 70mm * 38 mm
IP Rating	IP68
Driving Current	750ma, 1000ma,1250ma
LEDs (Pieces)	60
Waterproof Connector	2-pin, threaded, M15 (UL,/TUV/SGS/CQC-Listed)
N.W.	0.48Kg

M14-D01

LED Module



[Technical Parameters]

LED Brand	Philips-Lumileds 3030
Power Wattages	20W
Luminous Efficiency of Module	105lm/W
CCT	3000K 4000K 5000K 5700K
Dimensions	Φ86mm * 74mm
IP Rating	IP68
Driving Current	700mA
LEDs (Pieces)	24
Waterproof Connector	2-pin, threaded, M15 (UL,/TUV/SGS/CQC-Listed)
N.W.	0.22Kg

M15-D01A

LED MODULE



[Technical Parameters]

LED Brand	Philips-Lumileds Sanan,Tiandian 3030
Power Wattages	20W
Luminous Efficiency of Module	115lm/W
CCT	3000K 4000K 5000K 5700K
Dimensions	Φ105mm * 68.3mm
IP Rating	IP68
Driving Current	750mA
LEDs (Pieces)	24
Waterproof Connector	2-pin, threaded, M15 (UL,/TUV/SGS/CQC-Listed)
N.W.	0.30 Kg

M15-D01B

LED MODULE



[Technical Parameters]

LED Brand	Philips-Lumileds Sanan,Tiandian 3030
Power Wattages	10W
Luminous Efficiency of Module	120lm/W
CCT	3000K 4000K 5000K 5700K
Dimensions	Φ63 mm * 59.5mm
IP Rating	IP68
Driving Current	280mA
LEDs (Pieces)	10
Waterproof Connector	2-pin, threaded, M15 (UL,/TUV/SGS/CQC-Listed)
N.W.	0.14Kg

M15-D01C

LED MODULE



[Technical Parameters]

LED Brand	Philips-Lumileds Sanan,Tiandian 3030
Power Wattages	30W
Luminous Efficiency of Module	120lm/W
CCT	3000K 4000K 5000K 5700K
Dimensions	Φ100mm * 75 mm
IP Rating	IP68
Driving Current	700mA
LEDs (Pieces)	30
Waterproof Connector	2-pin, threaded, M15 (UL,/TUV/SGS/CQC-Listed)
N.W.	0.30Kg

M15-D01D

LED MODULE



[Technical Parameters]

LED Brand	Philips-Lumileds Sanan,Tiandian 3030
Power Wattages	60W
Luminous Efficiency of Module	120lm/W
CCT	3000K 4000K 5000K 5700K
Dimensions	Φ130mm * 84.4mm
IP Rating	IP68
Driving Current	1000mA
LEDs (Pieces)	63
Waterproof Connector	2-pin, threaded, M15 (UL,/TUV/SGS/CQC-Listed)
N.W.	0.46Kg

M14-D22

LED Module



[Technical Parameters]

LED Brand	Philips-Lumileds/ CREE/ Hongli/ Lightning 3030
Power Wattages	30W/40W
Luminous Efficiency of Module	115lm/W
CCT	3000K,4000K,5000K,5700K,6500K
Dimensions	298mm * 70mm * 30 mm
IP Rating	IP68
Driving Current	900ma, 1100ma
LEDs (Pieces)	60
Waterproof Connector	2-pin, threaded, M15 (UL,/TUV/SGS/CQC-Listed)
N.W.	0.42Kg

M15-D22

LED Module



[Technical Parameters]

LED Brand	Philips-Lumileds/ Refond 3030
Power Wattages	10W
Luminous Efficiency of Module	125lm/W
CCT	3000K 4000K 5000K 5700K 6500K
Dimensions	Φ 78mm * 70mm
IP Rating	IP67
Driving Current	300mA
LEDs (Pieces)	15
Waterproof Connector	2-pin, threaded, M15 (UL,/TUV/SGS/CQC-Listed)
N.W.	0.12kg

M16-D22

LED Module



[Technical Parameters]

LED Brand	Philips-Lumileds/ Refond 3030
Power Wattages	20W
Luminous Efficiency of Module	120lm/W
CCT	3000K 4000K 5000K 5700K 6500K
Dimensions	Φ 100mm * 75mm
IP Rating	IP67
Driving Current	600mA
LEDs (Pieces)	20
Waterproof Connector	2-pin, threaded, M15 (UL,/TUV/SGS/CQC-Listed)
N.W.	0.23kg

M17-D22

LED Module



[Technical Parameters]

LED Brand	Philips-Lumileds/ Refond 3030
Power Wattages	30W
Luminous Efficiency of Module	120lm/W
CCT	3000K 4000K 5000K 5700K 6500K
Dimensions	Φ 100mm * 90mm
IP Rating	IP67
Driving Current	900mA
LEDs (Pieces)	30
Waterproof Connector	2-pin, threaded, M15 (UL,/TUV/SGS/CQC-Listed)
N.W.	0.25kg

M18-D22

LED Module



[Technical Parameters]

LED Brand	Philips-Lumileds/ Refond 3030
Power Wattages	40W
Luminous Efficiency of Module	100lm/W
CCT	3000K 4000K 5000K 5700K 6500K
Dimensions	Φ 120mm * 90mm
IP Rating	IP67
Driving Current	1200mA
LEDs (Pieces)	40
Waterproof Connector	2-pin, threaded, M15 (UL,/TUV/SGS/CQC-Listed)
N.W.	0.38kg

M19-D22

LED Module



[Technical Parameters]

LED Brand	Philips-Lumileds/ Refond 3030
Power Wattages	50W
Luminous Efficiency of Module	120lm/W
CCT	3000K 4000K 5000K 5700K 6500K
Dimensions	Φ 136mm * 108.5mm
IP Rating	IP67
Driving Current	1500mA
LEDs (Pieces)	50
Waterproof Connector	2-pin, threaded, M15 (UL,/TUV/SGS/CQC-Listed)
N.W.	0.56kg

M21-D22

LED Module



[Technical Parameters]

LED Brand	Philips-Lumileds/ CREE/ Hongli/ Lightning 3030
Power Wattages	40w 50w 60w 70w
Luminous Efficiency of Module	170lm/W 160lm/W 150lm/W 140lm/W
CCT	3000K,4000K,5000K,5700K,6500K
Dimensions	300*70*47mm
IP Rating	IP68
Driving Current	800ma 100ma 1200ma 1400ma
LEDs (Pieces)	72
Waterproof Connector	2-pin, threaded, M15 (UL,/TUV/SGS/CQC-Listed)
N.W.	0.67Kg

M2-D24

LED Module



[Technical Parameters]

LED Brand	Philips-Lumileds/ CREE/ Sanan 3030
Power Wattages	30W/ 40W
Luminous Efficiency of Module	135lm/W
CCT	3000K 4000K 5000K 5700K
Dimensions	126mm * 99mm * 48.5mm
IP Rating	IP68
Driving Current	900-1200mA
LEDs (Pieces)	30, 40
Waterproof Connector	2-pin, threaded, M15 (UL,/TUV/SGS/CQC-Listed)
N.W.	0.42Kg

M3-D24

LED Module



[Technical Parameters]

LED Brand	Philips-Lumileds/ Epistar 3030
Power Wattages	30W
Luminous Efficiency of Module	110lm/W
CCT	3000K 4000K 5000K 5700K
Dimensions	Φ100mm * 60mm
IP Rating	IP67
Driving Current	900mA
LEDs (Pieces)	30
Waterproof Connector	2-pin, threaded, M15 (UL,/TUV/SGS/CQC-Listed)
N.W.	0.34Kg

M4-D24

LED Module



[Technical Parameters]

LED Brand	Philips-Lumileds/ Epistar 3030
Power Wattages	20W
Luminous Efficiency of Module	120lm/W
CCT	3000K 4000K 5000K 5700K
Dimensions	Φ100mm * 38mm
IP Rating	IP67
Driving Current	600mA
LEDs (Pieces)	20
Waterproof Connector	2-pin, threaded, M15 (UL,/TUV/SGS/CQC-Listed)
N.W.	0.29Kg

M5-D24

LED Module



[Technical Parameters]

LED Brand	Philips-Lumileds/ Epistar 3030
Power Wattages	10W
Luminous Efficiency of Module	120lm/W
CCT	3000K 4000K 5000K 5700K
Dimensions	Φ75mm * 38mm
IP Rating	IP67
Driving Current	300mA
LEDs (Pieces)	10
Waterproof Connector	2-pin, threaded, M15 (UL,/TUV/SGS/CQC-Listed)
N.W.	0.15Kg

M6-D24

LED Module



[Technical Parameters]

LED Brand	Philips-Lumileds/ Epistar 3030
Power Wattages	5W
Luminous Efficiency of Module	120lm/W
CCT	3000K 4000K 5000K 5700K
Dimensions	Φ75mm * 30mm
IP Rating	IP67
Driving Current	300mA
LEDs (Pieces)	9
Waterproof Connector	2-pin, threaded, M15 (UL,/TUV/SGS/CQC-Listed)
N.W.	0.12Kg

M1-A22

LED Module



[Technical Parameters]

LED Brand	Philips-Lumileds/ Refond 3030
Power Wattages	20W/ 30W/ 40W
Luminous Efficiency of Module	100-110lm/W
CCT	3000K 4000K 5000K 5700K 6500K
Dimensions	168mm * 100mm * 33mm
IP Rating	IP67
Input Voltage Range	110Vac/ 220Vac
LEDs (Pieces)	40
Waterproof Connector	2-pin, threaded, M15 (UL,/TUV/SGS/CQC-Listed)
N.W.	0.48Kg

M2-A22

LED Module



[Technical Parameters]

LED Brand	Philips-Lumileds/ Refond 3030
Power Wattages	20W/ 30W
Luminous Efficiency of Module	100lm/W
CCT	3000K 4000K 5000K 5700K 6500K
Dimensions	Φ100mm * 47mm
IP Rating	IP67
Input Voltage Range	220Vac
LEDs (Pieces)	30
Waterproof Connector	2-pin, threaded, M15 (UL,/TUV/SGS/CQC-Listed)
N.W.	0.24Kg

M3-A22

LED Module



[Technical Parameters]

LED Brand	Philips-Lumileds/ Refond 3030
Power Wattages	10W
Luminous Efficiency of Module	100lm/W
CCT	3000K 4000K 5000K 5700K 6500K
Dimensions	Φ78mm * 47mm
IP Rating	IP67
Input Voltage Range	220Vac
LEDs (Pieces)	14
Waterproof Connector	2-pin, threaded, M15 (UL,/TUV/SGS/CQC-Listed)
	0.12Kg

M4-A22

LED Module



[Technical Parameters]

LED Brand	Philips-Lumileds/ Refond 2835 3030
Power Wattages	20W
Luminous Efficiency of Module	120lm/W
CCT	3000K 4000K 5000K 5700K 6500K
Dimensions	Φ 100*75mm
IP Rating	IP67
Input Voltage Range	220Vac
LEDs (Pieces)	28
Waterproof Connector	2-pin, threaded, M15 (UL,/TUV/SGS/CQC-Listed)
	0.23kg

M5-A22

LED Module



[Technical Parameters]

LED Brand	Philips-Lumileds/ Refond 3030
Power Wattages	30W
Luminous Efficiency of Module	120lm/W
CCT	3000K 4000K 5000K 5700K 6500K
Dimensions	Φ 100mm * 90mm
IP Rating	IP67
Input Voltage Range	220Vac
LEDs (Pieces)	39
Waterproof Connector	2-pin, threaded, M15 (UL,/TUV/SGS/CQC-Listed)
	0.25kg

M6-A22

LED Module



[Technical Parameters]

LED Brand	Philips-Lumileds/ Refond 3030
Power Wattages	40W
Luminous Efficiency of Module	100lm/W
CCT	3000K 4000K 5000K 5700K 6500K
Dimensions	Φ 120mm * 90m
IP Rating	IP67
Input Voltage Range	220Vac
LEDs (Pieces)	40
Waterproof Connector	2-pin, threaded, M15 (UL,/TUV/SGS/CQC-Listed)
	0.38kg

M7-A22

LED Module

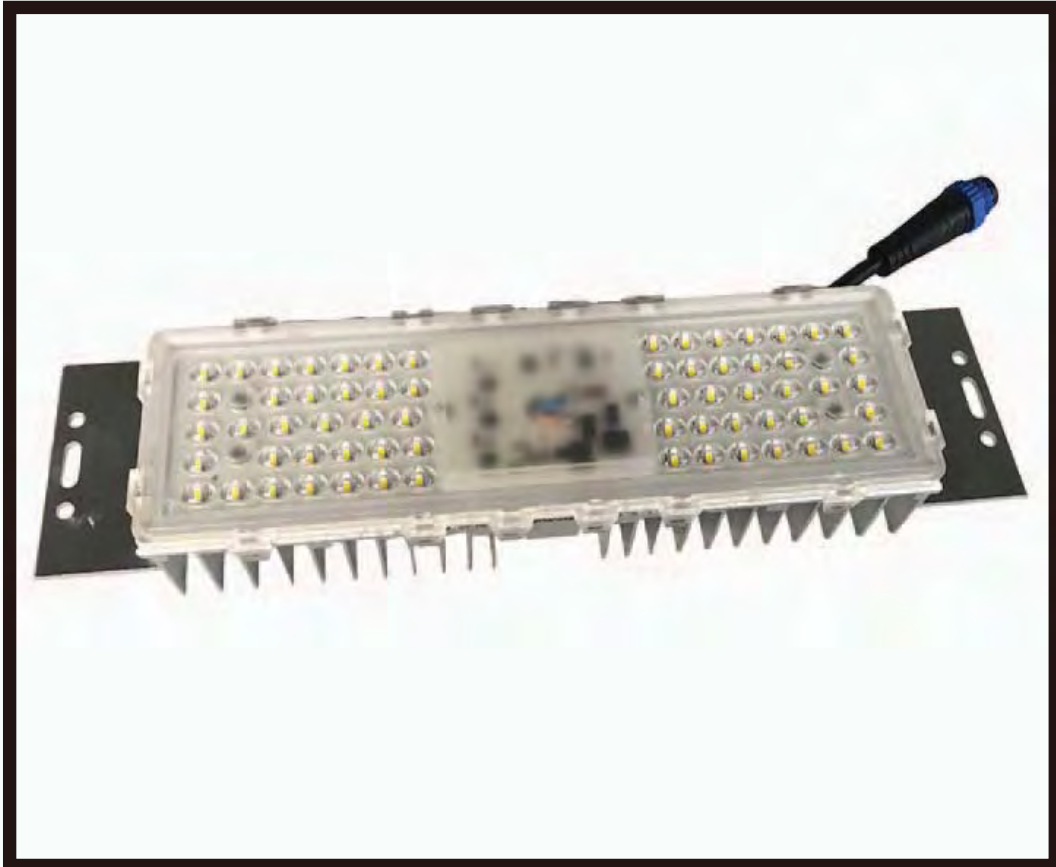


[Technical Parameters]

LED Brand	Philips-Lumileds/ Refond 3030
Power Wattages	50W
Luminous Efficiency of Module	100lm/W
CCT	3000K 4000K 5000K 5700K 6500K
Dimensions	Φ 136mm * 108.5mm
IP Rating	IP67
Input Voltage Range	220Vac
LEDs (Pieces)	40
Waterproof Connector	2-pin, threaded, M15 (UL,/TUV/SGS/CQC-Listed)
	0.56kg

M8-A22

LED Module



[Technical Parameters]

LED Brand	Philips-Lumileds/ Refond 3030
Power Wattages	40W 50W
Luminous Efficiency of Module	120lm/w 115lm/w
CCT	RGBW
Dimensions	298*74*40mm
IP Rating	IP67
Input Voltage Range	180~240v
LEDs (Pieces)	66
Waterproof Connector	2-pin, threaded, M15 (UL,/TUV/SGS/CQC-Listed)
	0.48kg

M9-A22

LED Module



[Technical Parameters]

LED Brand	Philips-Lumileds/ Refond 3030
Power Wattages	50W
Luminous Efficiency of Module	52lm/w
CCT	RGBW
Dimensions	298*74.4*40mm
IP Rating	IP67
Input Voltage Range	180~240v
LEDs (Pieces)	64
Waterproof Connector	2-pin, threaded, M15 (UL,/TUV/SGS/CQC-Listed)
	0.48kg

M11-D01

LED Module



[Technical Parameters]

LED Brand	Philips-Lumileds 5050
Power Wattages	30W/ 40W/ 50W/ 60W
Luminous Efficiency of Module	150-165lm/W
CCT	3000K 4000K 5000K 5700K
Dimensions	152mm * 115mm * 53mm
IP Rating	IP68
Driving Current	600-1200mA
LEDs (Pieces)	24
Waterproof Connector	2-pin, threaded, M15 (UL,/TUV/SGS/CQC-Listed)
N.W.	0.59Kg

M17-D01A

LED Module



[Technical Parameters]

LED Brand	Philips-Lumileds 5050
Power Wattages	30W/ 40W/50W/ 60W
Luminous Efficiency of Module	140~180 lm/W
CCT	3000K 4000K 5000K 5700K
Dimensions	275.2*75*52.1mm
IP Rating	IP68
Driving Current	600mA,800mA,1000mA,1200mA
LEDs (Pieces)	18,28
Waterproof Connector	2-pin, threaded, M15 (UL,/TUV/SGS/CQC-Listed)
N.W.	0.67 Kg

M17-D01B

LED Module

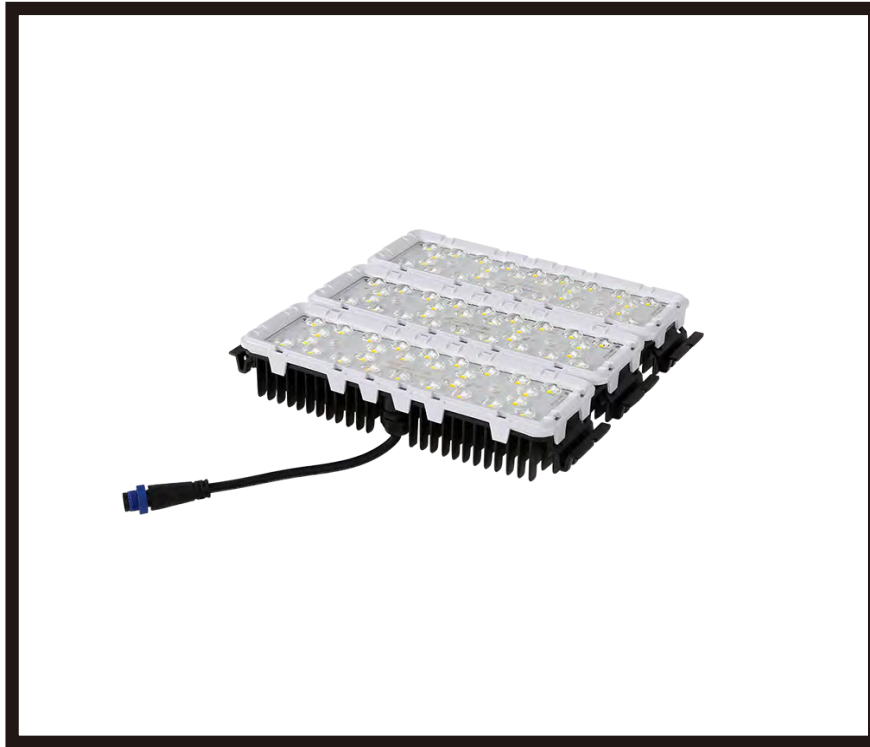


[Technical Parameters]

LED Brand	Philips-Lumileds 5050
Power Wattages	80W/100W/120W
Luminous Efficiency of Module	140~175 lm/W
CCT	3000K 4000K 5000K 5700K
Dimensions	275.2*155*52.1mm
IP Rating	IP68
Driving Current	600mA,800mA,1000mA,1200mA
LEDs (Pieces)	18*2,28*2
Waterproof Connector	2-pin, threaded, M15 (UL,/TUV/SGS/CQC-Listed)
N.W.	1.37 Kg

M17-D01C

LED Module

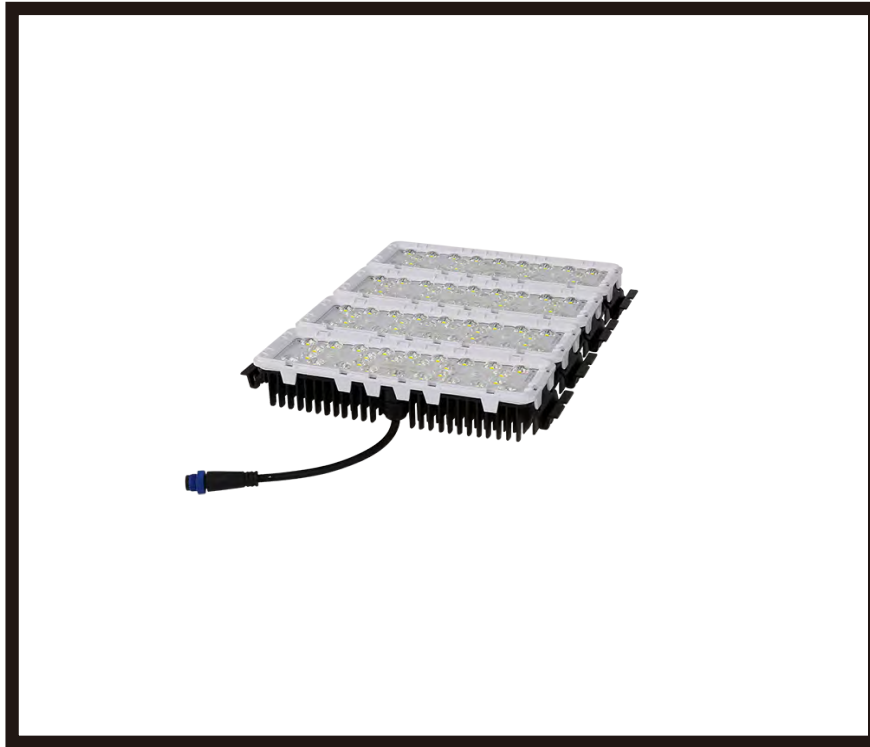


[Technical Parameters]

LED Brand	Philips-Lumileds 5050
Power Wattages	120W/150W/180W
Luminous Efficiency of Module	140~175 lm/W
CCT	3000K 4000K 5000K 5700K
Dimensions	275.2*235*52.1mm
IP Rating	IP68
Driving Current	800mA,1000mA,1200mA
LEDs (Pieces)	18*3,28*3
Waterproof Connector	2-pin, threaded, M15 (UL,/TUV/SGS/CQC-Listed)
N.W.	1.97 Kg

M17-D01D

LED Module



[Technical Parameters]

LED Brand	Philips-Lumileds 5050
Power Wattages	160W/200W/240W
Luminous Efficiency of Module	140~175 lm/W
CCT	3000K 4000K 5000K 5700K
Dimensions	275.2*315*52.1mm
IP Rating	IP68
Driving Current	800mA,1000mA,1200mA
LEDs (Pieces)	18*4,28*4
Waterproof Connector	2-pin, threaded, M15 (UL,/TUV/SGS/CQC-Listed)
N.W.	2.53 Kg

M22-D22

LED Module



[Technical Parameters]

LED Brand	Philips-Lumileds/ CREE/ Hongli/ Lightning 5050
Power Wattages	50w 60w 70w 80w
Luminous Efficiency of Module	170lm/W 160lm/W 150lm/W 140lm/W
CCT	3000K,4000K,5000K,5700K,6500K
Dimensions	300*70*47mm
IP Rating	IP68
Driving Current	800ma 100ma 1200ma 1400ma
LEDs (Pieces)	34
Waterproof Connector	2-pin, threaded, M15 (UL,/TUV/SGS/CQC-Listed)
N.W.	0.67Kg

M12-D01

LED Module



[Technical Parameters]

LED Brand	Philips-Lumileds 5050
Power Wattages	40W/ 50W/ 60W
Luminous Efficiency of Module	150-160lm/W
CCT	3000K 4000K 5000K 5700K
Dimensions	300mm * 75mm * 49mm
IP Rating	IP68
Driving Current	800-1200mA
LEDs (Pieces)	28
Waterproof Connector	2-pin, threaded, M15 (UL,/TUV/SGS/CQC-Listed)
N.W.	0.66Kg

M5-D22

LED Module



[Technical Parameters]

LED Brand	Lightning 5050
Power Wattages	40W/ 50W/ 60W
Luminous Efficiency of Module	150-160lm/W
CCT	3000K 4000K 5000K 5700K 6500K
Dimensions	298mm * 70mm * 47mm
IP Rating	IP67
Driving Current	850-1300mA
LEDs (Pieces)	28
Waterproof Connector	2-pin, threaded, M15 (UL,/TUV/SGS/CQC-Listed)
N.W.	0.67Kg

M9-D22

LED Module



[Technical Parameters]

LED Brand	Philips-Lumileds/ Lightning 5050
Power Wattages	40W/ 50W/ 60W
Luminous Efficiency of Module	150-160lm/W
CCT	3000K 4000K 5000K 5700K 6500K
Dimensions	298mm * 70mm * 47mm
IP Rating	IP68
Driving Current	850-1300mA
LEDs (Pieces)	30
Waterproof Connector	2-pin, threaded, M15 (UL,/TUV/SGS/CQC-Listed)
N.W.	0.67Kg

M10-D22

LED Module



[Technical Parameters]

LED Brand	Philips-Lumileds/ Refond 5050
Power Wattages	40W/ 50W/ 60W
Luminous Efficiency of Module	150-160lm/W
CCT	3000K 4000K 5000K 5700K 6500K
Dimensions	168mm * 130mm * 35mm
IP Rating	IP67
Driving Current	850-1300mA
LEDs (Pieces)	30
Waterproof Connector	2-pin, threaded, M15 (UL,/TUV/SGS/CQC-Listed)
N.W.	0.61Kg

M1-D24

LED Module



[Technical Parameters]

LED Brand	Philips-Lumileds/ CREE/ Sanan 5050
Power Wattages	30W/ 40W
Luminous Efficiency of Module	150-160lm/W
CCT	3000K 4000K 5000K 5700K
Dimensions	126mm * 99mm * 48.5mm
IP Rating	IP68
Driving Current	1000-1500mA
LEDs (Pieces)	15
Waterproof Connector	2-pin, threaded, M15 (UL,/TUV/SGS/CQC-Listed)
N.W.	0.42Kg

M9-D24

LED Module



[Technical Parameters]

LED Brand	Philips-Lumileds/ CREE/ Epistar 5050
Power Wattages	60W
Luminous Efficiency of Module	160lm/W
CCT	3000K 4000K 5000K 5700K
Dimensions	175mm * 130mm * 48mm
IP Rating	IP68
Driving Current	1200mA
LEDs (Pieces)	28
Waterproof Connector	2-pin, threaded, M15 (UL,/TUV/SGS/CQC-Listed)
N.W.	0.77Kg

M10-D24

LED Module



[Technical Parameters]

LED Brand	Philips-Lumileds/ CREE/ Epistar/ Sanan 5050
Power Wattages	45W
Luminous Efficiency of Module	150lm/W
CCT	3000K 4000K 5000K 5700K
Dimensions	210mm * 70mm * 50mm
IP Rating	IP68
Driving Current	900mA/ 1800mA
LEDs (Pieces)	14
Waterproof Connector	2-pin, threaded, M15 (UL,/TUV/SGS/CQC-Listed)
N.W.	0.53Kg

M20-D22

LED Module



[Technical Parameters]

LED Brand	Philips-Lumileds/ CREE/ Epistar/ Sanan 3030/5050
Power Wattages	30W 40W 50W 60W
Luminous Efficiency of Module	125lm/w 120lm/w 115lm/w 110lm/w
CCT	3000K 4000K 5000K 5700K
Dimensions	168*100*50mm
IP Rating	IP68
Driving Current	800ma 1050ma 1250ma 1500ma
LEDs (Pieces)	1
Waterproof Connector	2-pin, threaded, M15 (UL,/TUV/SGS/CQC-Listed)
N.W.	0.66kg